



Mr.

17 Apr 2026

Model: Numerology-Report

Order No: 121961901

# Numerological Results

Model: Numerology-Report

Order No: 121961901

Date: 17/04/2026

Name Mr.  
Date of Birth 17/04/2026  
Radical No. 8  
Lucky No. 4  
Naamank 6  
Radical No.Lord Saturn  
Lucky No. Lord Ura/Rah  
Naamank Lord Venus  
Friendly Nos. 1, 4  
Evil Nos. 3, 6  
Neutral Nos. 2, 5, 7, 9  
Sign.Years 2042,2051,2060,2069,2078,2087,2096,2105  
Benefic Age 16,25,34,43,52,61,70,79  
Fav. Days Sat, Sun, Mon  
Fav. Mths Jan, Apr, Aug  
Fav.Dates 8, 17, 26  
Fav.Stone Blue Sapphire  
Other Fav.Stone Amethyst,Blue Tourmaline  
God Bhairav  
Fav. Metal Iron  
Fav. Color Black  
Mantra Om Bhram Bhrim Bhrom Sah Rahve Namah  
Fav. Yantra Rahu Yantra

13	8	15
14	12	10
9	16	11

**My Company Punjabi**

Address : E-908, Saviour Green Arch, Noida Ext.

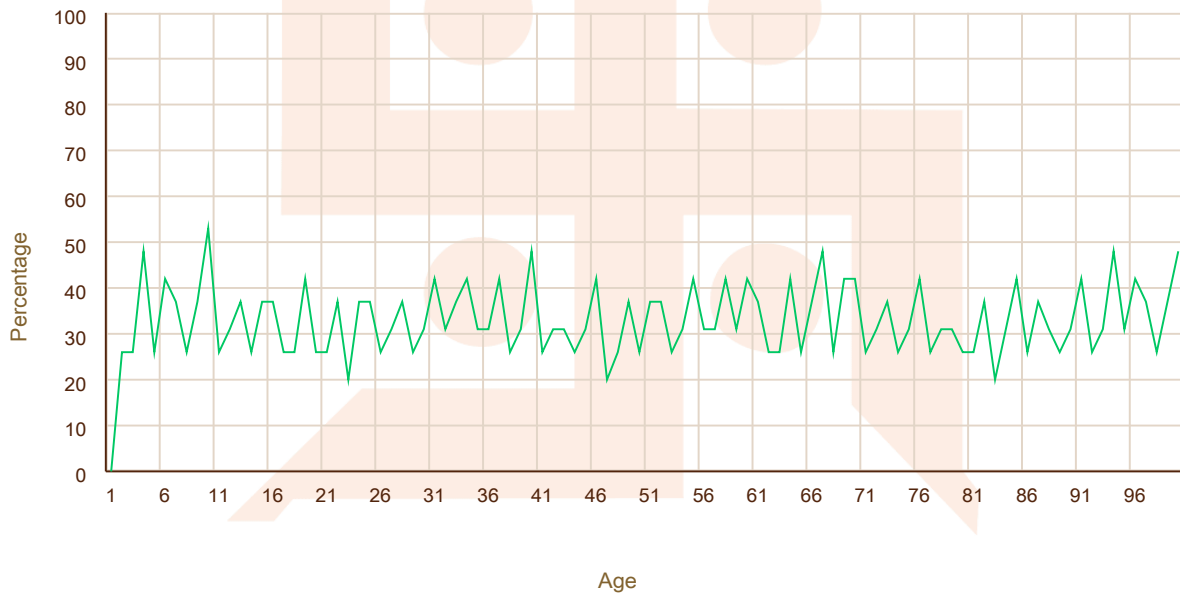
U.P. Pin : 201306

Mob : - 9540952029

Email Id : pooja@gmail.com

# Numerological Life Graph

The relationship created by your radical number and lucky number with the numbers related to the year of your birth and life, are shown in the graph below. From this graph you can easily know the benefic year of your life, or which year of your life is likely to be malefic for you. To create this graph, relationship between the radical and lucky numbers of the year of your life has been taken into account. If the graph shows numbers more than 60, that year likely to be important for you and if the number is less than 40, the year can be a miserable one for you.



Sign. Years            2042,2051,2060,2069,2078,2087,2096,2105

Benefic Age            16,25,34,43,52,61,70,79

**My Company Punjabi**

Address : E-908, Saviour Green Arch, Noida Ext.

U.P. Pin : 201306

Mob : - 9540952029

Email Id : pooja@gmail.com

## Numerology Prediction

Born on the 17th, your Radical number is 8 (1+7), ruled by Saturn. Influences also come from the Sun (1) and Ketu or Neptune (7). Saturn's influence means your rise in life will be gradual and marked by obstacles, requiring significant hard work and patience. Avoid laziness and despair, as they will hinder your progress; instead, focus on the theory of karma (dedicated effort). The Sun and Neptune provide you with sharp intuition and judgment, while the Sun ensures lasting fame. You are popular in high society and possess a strong will, which makes you firm in your views. Be careful not to be overly obstinate or short-tempered, as this could cause harm. By virtue of these planetary influences, you will achieve high esteem and serve as an example to others.

The ruler of your Lucky number 4, according to Indian tradition, is Rahu, but according to Western astrology, it is Herschel (Uranus). Due to Herschel's effect, your rise in luck will happen suddenly. There will be many tasks in your life that may not bear fruit even after hard work within the desired period, and their progress may stall. However, one day you will achieve success in such endeavours. You will strive for change in your functional area; a mission to change old beliefs will drive you. You will distance yourself from old conventions and embrace modernity. You will be interested in fields involving science and learning, and tasks that others find difficult will be dear to you.

There will be an explosiveness in your affairs, and you will come into the limelight suddenly. However, this prominence may not be stable. Frequent changes may stall your advancement. Sudden successes and failures should teach you that luck fluctuates. It is, therefore, advisable that you distance yourself from explosive or risky situations. Carefully planned actions may enhance your destiny.

Your Radical number is 8 and your Lucky number is 4. The ruler of Radical number 8 is Saturn, and the lord of Lucky number 4 is Herschel (Uranus). These numbers share a friendly relationship. Consequently, you will receive the full benefits of your Radical and Lucky numbers. Your progress in your career or business will be slow initially. You will have to work very hard, and your advancement will be gradual. After climbing each step, you will halt for a while before climbing again. Most of your projects will be completed after facing hurdles and experiencing delays. Initially, you may not be financially well-off; however, your situation will improve steadily from your middle years until the end. Despite the above, your projects will never stall due to a lack of funds. You possess a strong sense of pride and strive to adhere to

your principles. Your social status will be favourable, earning you significant respect. The final stage of your life will be filled with luxury and comfortable amenities.

The rise of your fortune will begin at the age of 22. There will be a significant upswing at 31, and your career will reach its peak at 40.

Your Radical number 8 is compatible with 1 and 4, and your Lucky number 4 is a friend to 1 and 8. Therefore, the numbers 1, 4, and 8 will be significant and lucky for you, leading to several important events in your life.

Since your Radical and Lucky numbers are on friendly terms, their influence on your life will be favourable. Many important events will occur on dates, months, and years—including your age—that correspond to your Radical and Lucky numbers.

Whenever specific dates, months, years, and your lucky days of the week coincide, those days will be auspicious for starting new work, writing letters, or meeting senior officials. If you review significant past events, you will find many occurred during months, years, or on days associated with your Radical, Lucky, or friendly numbers.

Based on an analysis of your past, the numbers you find to be favourable are ideal for planning your future.

The months of January, April, and August are important for you. You should start significant tasks on days when the day, date, month, and year are all compatible with your Radical and Lucky numbers to maximize your luck.

If the sum of a calendar year reduces to 1, 4, or 8, that year will be lucky for you.

Similarly, years of your age that total 1, 4, or 8 will be lucky for you.

1. 10, 19, 28, 37, 46, 55, 64, 73

4. 13, 22, 31, 40, 49, 58, 67

8. 17, 26, 35, 44, 53, 62, 71

The years mentioned above will be transformative for your life. A few

significant events will occur during these years, changing your life's direction and remaining memorable.



**My Company Punjabi**

Address : E-908, Saviour Green Arch, Noida Ext.

U.P. Pin : 201306

Mob : - 9540952029

Email Id : pooja@gmail.com

## Adjustment of your Name Number

In this world if a person does not have a name he has nothing with him. Only an appropriate name can render success. A proper name alone can give renown in the country and abroad. Therefore it is essential that a name is chosen in a manner that it can render fame, glory and prestige in society and can enable the native to be remembered for centuries with reverence. How far is your name assisting you in developing your luck and prestige, you can learn by following calculations. By a change in name your destiny can be enhanced.

**Mr .**

**4+2**

**Name-Total : 6 Naamank : 6**

The sum total of your name is 6; therefore, your Name number is 6. Its ruler is Venus, which will govern your life. You will have a strong magnetic quality through which you will gain great popularity. You will relish having relationships and conversations with attractive men and women. You may develop your business in the field of arts. You will take a keen interest in fine arts and literature. You like living in beautiful houses and have a penchant for graceful objects. Keeping everything well-decorated in your office and home will please you. You may be slightly obstinate and prone to jealousy; these traits may harm you. You will be an expert at winning hearts and will be successful in spreading your fame through your deeds.

The Name number for your name Mr. is 6. This number has moderate relations with both your Radical number 8 and your Lucky number 4. Therefore, you may not be able to reap the full benefits from the ruling planets of your Radical and Lucky numbers. If you wish to obtain the complete patronage of these planets, you should change your name so that your Name number is fully compatible with both your Radical and Lucky numbers.

By changing your name, you will receive the full benefits of your ruling planets, allowing you to gain popularity across different sections of society. For optimal results, please change your name so that its Name number becomes 8 and not 3. Such a name will open the doors to progress, and you will attain worldly success in its totality. For a name change, the numbers 1,4 will be lucky, while 5,6 will be unsuitable.

For change in name we are giving below the method of converting english letters into numbers alongwith examples. By its help you can change your name and

**My Company Punjabi**

Address : E-908, Saviour Green Arch, Noida Ext.

U.P. Pin : 201306

Mob : - 9540952029

Email Id : pooja@gmail.com

make necessary modifications easily and make your Name Number favourable for you. By change of name you can make your Name fortunate alongwith your Radical and Lucky numbers.

**A B C D E F G H I J K L M N O P Q R S T U V W X Y Z**

**1 2 3 4 5 8 3 5 1 1 2 3 4 5 7 8 1 2 3 4 6 6 6 5 1 7**

**For Example :--**

To reduce the number--G A N E S H A

$$3+1+5+5+3+5+1=23=5$$

G A N E S H

$$3+1+5+5+3+5=22=4$$

No. 1. :--

R A M

$$2+1+4=7$$

R A M A

$$2+1+4+1=8$$

No. 2. :--

B I N D R A

$$2+1+5+4+2+1=15=6$$

B R I N D R A

$$2+2+1+5+4+2+1=17=8$$

No. 3. :--

R A M C H A N D

$$2+1+4+3+5+1+5+4=25=7$$

R A M C H A N D R A

$$2+1+4+3+5+1+5+4+2+1=28=1$$

No. 4. :--

K R I S H N A

$$2+2+1+3+5+5+1=19=1$$

K R E S H N A

$$2+2+5+3+5+5+1=23=5$$

No. 5. :--

T E W A R I

$$4+5+6+1+2+1=19=1$$

T I W A R I

$$4+1+6+1+2+1=15=6$$

No. 6. :--

A G G A R W A L

$$1+3+3+1+2+6+1+3=20=2$$

A G A R W A L

$$1+3+1+2+6+1+3=17=8$$

**My Company Punjabi**

Address : E-908, Saviour Green Arch, Noida Ext.

U.P. Pin : 201306

Mob : - 9540952029

Email Id : pooja@gmail.com

## Lo Shu Prediction

4 4 4	9	2 2 2
3	5	7 7
8 8	1 1	6 6

### Introduction to the Lo Shu Grid

#### Introduction to the Lo Shu Grid

The Lo Shu chart is a significant component of Chinese numerology. It is based on the miraculous Lakshmi Yantra. Through this method, you can understand your complete personality with great simplicity and speed, using only your date of birth. This method also allows us to suggest ways to mitigate the harmful effects of missing digits in your chart. The rows, columns, and groups of numbers present or absent in the chart help describe your personality in detail.

### Number 1 - Occurs Once

#### Number 1 - Occurs Once

The number one appears only once in your Lo Shu chart. Consequently, you may struggle to express your inner feelings or thoughts. While you may function well in other areas, you feel distressed and hesitant when trying to reveal your inner personality. It is often difficult for you to understand or appreciate another person's perspective. You are easily prone to sadness and loneliness. You tend to be overly meticulous in collecting and storing data, which leads to time wastage and unnecessary delays in completing tasks. For continuous growth and development, you require a calm and harmonious environment. Although you can be successful in

#### My Company Punjabi

Address : E-908, Saviour Green Arch, Noida Ext.

U.P. Pin : 201306

Mob : - 9540952029

Email Id : pooja@gmail.com

a job or business, you may face setbacks because you struggle to explain things practically or communicate clearly.

### **Number 2 - Occurs Twice**

Number 2 - Occurs Twice

The number 2 appears twice in your Lo Shu chart. This indicates that you are intelligent, sensitive, and intuitive, and you utilize these gifts well. You possess an amazing ability to immediately understand people's true intentions. You are adept at assessing others at a glance and value your time highly. You make quick, accurate decisions. Your greatest quality is your adaptability; you have an incredible ability to adjust to various times and situations, earning you respect in society and financial stability. You earn comfortably through your intelligence. You often find support in life; if one helper leaves, another appears. Thus, you are never short of genuine help.

### **Missing Number 3:**

Missing Number 3:

The number 3 is absent from your Lo Shu chart, which may result in less grace from mentors or divine influences. You may experience a lack of confidence and struggle to think logically when distracted, making it difficult to express yourself. You also have a tendency to underestimate your abilities. During difficult times, you may struggle to think clearly, requiring immense hard work to achieve your goals. You often get lost in your imagination and find it hard to maintain relationships. A perceived weakness in mental capacity or foresight can lead to various difficulties. You may lack imagination, knowledge, and the ability to handle mental, physical, or financial constraints. You are easily upset and may lack interest in spirituality or knowledge. You need to accept yourself, move forward, and gradually build your self-confidence and self-esteem.

### **Number 4 - Occurs Twice**

Number 4 - Occurs Twice

Number Four appears twice in your Lo Shu chart. You take more interest in tangible and materialistic industries than in other activities. Thanks to your management skills, you complete any task you start, regardless of its difficulty. You are orderly, realistic, and possess creative abilities. With your proficiency in handicrafts, you enjoy creating beautiful objects. You succeed in tasks that require calculation, analysis, and effective communication. Your strong intellectual capacity allows you to distinguish clearly between right and wrong. You have the potential to be a great speaker, poet, teacher, or artist. You dislike laziness; your work is perfectly

**My Company Punjabi**

Address : E-908, Saviour Green Arch, Noida Ext.

U.P. Pin : 201306

Mob : - 9540952029

Email Id : pooja@gmail.com

organized and creative, and you always complete assigned tasks on time.

### **Missing Number 5:**

Missing Number 5:

The number 5 is missing from your Lo Shu chart. Therefore, you experience difficulty in setting goals and lack versatility and willpower. You fail to communicate effectively and lack an interest in reading or financial stability. You lose patience quickly; success is not easily found because you lack effective communication skills. Injuries and accidents are frequent in your life. You should always drive carefully. You face many challenges and ups and downs in your personal life. Failure occurs in many tasks, causing upheaval in your family life. You need constant inspiration from others. In such situations, you need to learn to set realistic goals and move toward the next one only after achieving the current one.

### **Number 6 - Occurs Once**

Number 6 - Occurs Once

The digit six appears once in your Lo Shu chart. This indicates a deep affection for your home and relatives. You enjoy fulfilling family responsibilities and domestic duties. You possess creative abilities and are a master of functional skills. You are popular in society and clever at uncovering well-guarded secrets. You are grounded in worldly matters and successful in reaching your goals. You are diligent, well-organized, and decent. You are rarely satisfied with a single source of income; even if you are employed, a business-oriented mindset predominates, and you tend to succeed in your career. You are a good parent, and family members often seek your counsel during crises. However, you may also experience a strong sense of insecurity and occasional worries about isolation or disorder.

### **Number 7 - Occurs Once**

Number 7 - Occurs Once

The digit seven appears only once in your Lo Shu chart. You tend to gain deep life experiences through the loss of love, health, or property. Learning from these bitter experiences makes you more inclined toward spiritual growth and self-knowledge. You may find it difficult to grasp deep inner truths. There is a frequent possibility of injury or illness affecting the lower parts of your body. While you are capable of working independently, you can be impractical, over-imaginative, and fearful, which may hinder your daily functioning. At times, extreme candor or an obsession with your identity can make you subservient to others. A weak memory might also cause difficulties in your daily tasks.

---

#### **My Company Punjabi**

Address : E-908, Saviour Green Arch, Noida Ext.

U.P. Pin : 201306

Mob : - 9540952029

Email Id : pooja@gmail.com

## Number 8 - Occurs Once

### Number 8 - Occurs Once

The number eight appears only once in your Lo Shu chart. While you are suited for judicial or legal work and editing, you often struggle to complete the tasks you start. Possessing a restless intelligence, you constantly seek out unusual challenges. A lack of concentration may lead to significant struggles in life. Because you do not always achieve outward success, you may experience a sense of isolation. You are not one for pretense, which can lead others to perceive you as cold or harsh. You are strong-willed and occasionally exhibit unusual behavior. A lack of self-control or proper guidance can lead to hasty actions that you later regret. You may face many obstacles and delays in your work.

## Missing Number 9:

### Missing Number 9:

The number 9 is missing from your Lo Shu chart. Consequently, you may tend to ignore the feelings and needs of others. You might feel disconnected or indifferent to the events in the lives of those around you. In moments of extreme enthusiasm, you may deviate from your actual purpose. Insecurity can lead to a suspicious attitude toward judgment and justice. You may lack courage or a genuine concern for human welfare. Life often involves significant struggle, and happiness is not easily attained. You frequently retreat into a world of fantasies. Childhood learning difficulties may have contributed to a life full of struggle. You need to learn to dedicate yourself to service and become a true humanitarian, developing qualities of dedication and kindness.

## Presence of the Four Outer Diagonal Digits (4, 8, 6, 2)

### Presence of the Four Outer Diagonal Digits (4, 8, 6, 2)

All four outer diagonal digits—4, 8, 6, and 2—are present in your Lo Shu Chart. This is considered a highly auspicious configuration, indicating significant artistic and creative talents. You are fortunate, intelligent, and skilled, always brimming with energy and confidence. In any profession, your ability and imagination allow you to carve out your own successful path. You are well-organized, self-disciplined, and hardworking. Your colleagues and relatives feel comfortable and close to you. Due to your diligence, knowledge, and creativity, you are likely to occupy high positions as a teacher, philosopher, theologian, scientist, minister, or writer. You possess the capability to lead large-scale projects successfully. You approach your work with seriousness in any field and are destined to reach your goals. Through persistent effort, your inner wisdom is awakened. In this

### My Company Punjabi

Address : E-908, Saviour Green Arch, Noida Ext.

U.P. Pin : 201306

Mob : - 9540952029

Email Id : pooja@gmail.com

configuration, 4 represents Rahu, 8 represents Saturn, 6 represents Venus, and 2 represents the Moon. The presence of these four digits forms several auspicious Yogas that bring significant success to your life.

### **Row of Prosperity (8, 1, 6)**

Row of Prosperity (8, 1, 6)

The bottom row of digits 8, 1, and 6 is present in your Lo Shu chart. Therefore, you demonstrate excellence in business and commerce-related tasks. You may sometimes focus more on earning money than on the higher spiritual qualities of life. You are social, thoughtful, and sensitive. While you achieve significant material success, you might sometimes do so by overlooking the needs and sensibilities of others. You refuse to compromise your freedom in any situation. You possess a progressive and winning mindset. You are versatile and believe in finding answers with great patience. You know how to inspire those around you, making this a clear indicator of talent and prosperity. You often find success in legal matters, public works, or sales. It is important for you to develop the ability to understand others better and to adapt to situations by overcoming rigidity and personal weaknesses.

### **The Column of Diligence (6, 7, 2)**

The Column of Diligence (6, 7, 2)

The digits 6, 7, and 2 are present in your Lo Shu Chart's column. This indicates that you are active and enjoy physical activities. You are naturally drawn to exercise and sports; you are brave, courageous, and possess great physical strength. You have a focused quality and do not leave work unfinished. You possess an immense store of power, which you utilize effectively when taking risks. You are happiest when busy and are always ready to work. When you desire something, you want it immediately and can become impatient. You are determined to achieve results quickly. You do not hesitate or dally, preferring instead to make rapid decisions. Consequently, you may occasionally regret these hasty choices. Being fearless, you rarely listen to others, preferring to make your own decisions. You excel in sports, sales, marketing, and any business involving physical activity. You dislike sedentary work and prefer a career that keeps you on the move.

### **Presence of Water Element: Digit 1**

Presence of Water Element: Digit 1

There is a presence of the water element in your Lo Shu chart. Water represents wisdom and knowledge; it is resilient yet strong, still yet flowing. The

---

#### **My Company Punjabi**

Address : E-908, Saviour Green Arch, Noida Ext.

U.P. Pin : 201306

Mob : - 9540952029

Email Id : pooja@gmail.com

number 1 is related to the Sun, Water is calm yet dangerous. The surface is only the beginning, with the actual movements hidden in its depths. You enjoy time in your own company for internal reflection. Your character is calm and peaceful, but you have a great ability to overwhelm others. You are also fearless, courageous, and self-respecting. You always reach the top due to your hard work in your job or business. You are skilled in any work you undertake and look at your life in an impartial manner.

Features - You are skilled in political work and have the ability to lead your family, society, and nation. You possess a sharp eye, sympathy, and are a good intermediary. Firm, comfortable, and flexible, gentle but strong, you possess the qualities of foresight.

Weaknesses - Self-indulgence, being too passive, placing too much trust in others, indecision, and anxiety are your demerits.

### **Presence of Earth Element: Digits 2, 5, or 8**

Presence of Earth Element: Digits 2, 5, or 8

There is a presence of the earth element in your Loshu chart. Earth is stable and acts as an intermediary; it is a natural peacekeeper. The earth is patient, considerate, and calm. While the earth is warm and nourishing, it can also easily become self-centered because it believes it is the center of everything. Earth is protective, just as it protects roots, keeping everything together. People of this element have a great deal of sympathy and find themselves constantly concerned about the happiness of others. Digit 2 belongs to the Moon, digit 5 belongs to Mercury and digit 8 belongs to Saturn. Such individuals are wealthy and often have their own home attached to the land.

Features - Such people are stable, serious, practical, logical, compassionate, caring, sympathetic, responsive, loyal, and honest. They are nurturing, organized, good at planning, strong, and enduring.

Weaknesses - Being over-protective, stubborn, a congenital miser, or conservative, and having trouble taking risks.

### **Presence of Wood Element: Digits 3 or 4**

Presence of Wood Element: Digits 3 or 4

There is a presence of the wood element in your Loshu chart. Wood is

---

#### **My Company Punjabi**

Address : E-908, Saviour Green Arch, Noida Ext.

U.P. Pin : 201306

Mob : - 9540952029

Email Id : pooja@gmail.com

generous and spacious, taking care of others deeply. Like bamboo, wood is strong yet flexible, a natural-born leader. Its roots dig deep into the earth; however, wood also requires moisture to survive. Wood features are often associated with sexuality and patience. However, to maintain balance, wood can also be intrusive and aggressive. In Loshu, wood is represented by digits 3 and 4. The number 3 is related to Jupiter, and the digit 4 is related to Rahu. Such individuals are constantly looking to expand and grow. Able to perform even the most complex tasks, you get your work done easily.

Features - They are very smart, have a good understanding, and are warm, affable, kind, flexible, adaptable, stable, practical, and generous.

Weaknesses - Lacking a good sense of boundaries or limitations, becoming too passive, and relying too much on others.

### **Presence of Metal Element: Digits 6 or 7**

Presence of Metal Element: Digits 6 or 7

There is a presence of the metal element in your Loshu chart. Metal is like a diamond found in the mines; it is the breath of life. People belonging to the metal element respect themselves and others as well. The number 6 belongs to Venus, and 7 is related to Ketu. People influenced by this element are strong and tough, but they adapt and change when pressured. Metal is inscribed, hardened, and fixed without losing its essence. People with this element are minimalist and enjoy the simplicity of an organized and clean life, although metal on the downside can also be powerful and controlled. In fact, your life does not require complex or unnecessary feelings.

Features - You are adventurous, ambitious, independent-minded, driven toward set goals, disciplined, and focused, possessing high morality and high standards.

Weaknesses - A lack of communication skills, stubbornness, occasional self-undervaluation, cruelty, ruthlessness, a tendency to easily cut ties, and a feeling of being overwhelmed by crowds are among your weaknesses.

### **Absence of the Fire Element: Digit 9**

Absence of the Fire Element: Digit 9

There is an absence of the fire element in your Loshu chart, so your life

---

#### **My Company Punjabi**

Address : E-908, Saviour Green Arch, Noida Ext.

U.P. Pin : 201306

Mob : - 9540952029

Email Id : pooja@gmail.com

involves much struggle. Due to your nature, you may create many enemies, and you receive less happiness from siblings. There is a possibility of theft or fire-related accidents in your home. While you have the capacity for good decision-making, you often take decisions too quickly, leading to various problems. In moments of extreme enthusiasm, you may deviate from your purpose. You can become suspicious of judgment and justice due to underlying feelings of insecurity. Life involves significant struggle, and the means of happiness are not easily obtained. You often retreat into a world of fantasies.



**My Company Punjabi**

Address : E-908, Saviour Green Arch, Noida Ext.

U.P. Pin : 201306

Mob : - 9540952029

Email Id : pooja@gmail.com

# Numerological Remedies

## Favourable Time

According to the Western view, the Sun remains in Capricorn and Aquarius from December 23rd to February 19th; however, according to Indian thought, it resides in these signs from January 14th to March 13th. These are Saturn's own signs. From October 17th to November 13th, the Sun is in Libra, which is the exaltation sign of Saturn. These dates are lucky for people with Radical Number 8.

## Favourable Day

Saturday, Sunday, and Monday are lucky days for you. If you begin any important work, professional tasks, or meetings with high-ranking officials during these days, it will be auspicious for you.

## Favourable Dates

The dates 1, 4, 8, 10, 13, 17, 19, 22, 26, 28, and 31 will be lucky for you when starting new or important work, trade-related tasks, or meeting an important person. Try to undertake such jobs on these dates.

## Unfavourable Dates

The dates 3, 6, 12, 15, 21, 24, and 30 will not be lucky for you. You should avoid performing important tasks on these dates.

## Friendship & Parternership

Persons born on the 1st, 4th, 8th, 10th, 13th, 17th, 19th, 22nd, 26th, 28th, and 31st, or during the periods from January 14th to March 13th or October 17th to November 13th, are lucky for you. You may experience significant gains through them.

## Love & Marriage

When selecting a person of the opposite sex for business, employment, marriage, or a relationship, choose someone with Radical Number 1, 4, or 8 (meaning those born on the 1st, 4th, 8th, 10th, 13th, 17th, 19th, 22nd, 26th, 28th, or 31st of any month). Such people will be lucky for you.

### My Company Punjabi

Address : E-908, Saviour Green Arch, Noida Ext.

U.P. Pin : 201306

Mob : - 9540952029

Email Id : pooja@gmail.com

### **Favourable Color**

For you, colors like dark brown, black, dark blue, or coffee will be lucky. You should choose these colors for your house doors, curtains, bed sheets, and other items. If your health is poor, wearing clothes of these colors and keeping a handkerchief in these shades will assist in your recovery. Wearing these colors for important tasks will also be lucky for you.

### **Vaastu & Niwas**

Choose the West direction for your house, flat, or shopping complex, as West is a lucky direction for Radical Number 8. It is beneficial if your house number totals 8. Residing in the western area of a city or the western part of your home will be advantageous. Similarly, performing important tasks while facing or sitting in this direction will be good for you.

### **Lucky Vehicle Number**

The numbers 1 and 4 are friends of your Radical Number 8. Therefore, whenever you buy a vehicle, it will be lucky if its registration number totals 1 or 4. For example, a vehicle with a registration number like 5237 ( $5+2+3+7=17$ ,  $1+7=8$ ) would be compatible. Similarly, any vehicle for your journey having such compatible numbers will be lucky. If you book a hotel room, a number like 107 ( $1+0+7=8$ ) will be lucky for you.

### **Health & Disease**

The ailments that may affect you include wind-related troubles, physical weakness, vision issues, heart weakness, anemia, constipation, arthritis, blood pressure, headaches, leprosy, urinary disorders, baldness, and ear-nose-throat troubles. During your difficult days, worship Shani (Saturn).

### **Occupation**

The occupations suitable for you include: athletics, games and sports, police, military, contracting, trading in tin sheets, labor-related services, small industry, law, astrology, science, poultry farming, gardening, coal, timber, watchmaking, legal professions, leadership, policy planning, religious work, Karmkaand (rituals), teaching, and music.

#### **My Company Punjabi**

Address : E-908, Saviour Green Arch, Noida Ext.

U.P. Pin : 201306

Mob : - 9540952029

Email Id : pooja@gmail.com

## Fast

Observe a fast on Saturdays to mitigate the malefic effects of Saturn. Wear black or blue clothes on these days. Maintain this fast for 19 or 51 Saturdays. Massage oil on your body, donate oil, and worship the Peepal tree. Recite the Shani mantra on Rudraksha beads as much as possible.

## Favourable Stones or Substitute Stones

Blue sapphire will be most beneficial for you. If it is not available, you may wear Lajvard (Lapis Lazuli), Bangkok sapphire, or Black Neelam. Wear the stone on a Saturday during the bright half of the month at an auspicious time, set in a silver or three-metal ring weighing 3.3 to 5.3 carats, on the middle finger of your right hand.

## Favourable Lord

You should worship Saturn or Batuk Bhairav. Recite the Batuk Bhairav Mantra 108 times daily using Rudraksha beads. All your problems and diseases will be resolved.

The Batuk Bhairav Mantra is:

"Hreem Batukay Aapdudharnay Kuru Kuru Batukay Hreem".

This 21-letter mantra can fulfill all your desires. Its recitation on Ashtami (the 8th day of the Indian calendar) of Krishna Paksha (the dark half of the lunar month) is highly beneficial.

## Grah Gayatri Mantra

You should recite the Shani Gayatri Mantra daily after bathing, 11, 21, or 108 times, to increase the beneficial effects of Saturn.

The Shani Gayatri Mantra:

"Om Bhagbhavay Vidmahe Mrityuroopay Dheemahi Tanno Shanih Prachodyat".

## Grah Dhayan Mantra

Every morning upon waking, concentrate on Saturn, visualize its image in your mind, and recite the following mantra:

Nilanjan Samabhasam,  
Raviputram Yamagrajam,

## My Company Punjabi

Address : E-908, Saviour Green Arch, Noida Ext.

U.P. Pin : 201306

Mob : - 9540952029

Email Id : pooja@gmail.com

Chhaya Martanda Sambhootam,  
Tam Namami Shanaishcharam.

### **Grah Jaap Mantra**

Recite the Shani Mantra to appease a malefic Saturn. Reciting it at least 108 times daily can provide the desired results. A complete course consists of 23,000 recitations (230 x 108 times). You will be able to witness the results yourself.

Mantra:

"Om Pram Preem Prom Sah Shaneshcharay Namah" — 23,000 times.

### **Herbal Wearings**

On a Saturday, obtain a one-inch-long root of Bichu (a prickly plant). Wrap it in a black thread and tie it around your right arm, or place it in an iron or glass Tabeez (talisman) to wear around your neck. This will reduce the malefic effects of Saturn and enhance its beneficial influence.

### **Herbal Bath**

Every Saturday, take a bucketful of water and mix in a powdered blend of collyrium, black Til (sesame), aniseed, Nagarmotha (Cyperus grass), Lodh (bark of Symplocos racemosa), etc. Bathing with this water will rid you of various ailments. This herbal bath will provide a new glow to your skin. The effects of a malefic Saturn will be reduced, and your self-esteem will increase.

To appease all the planets, mix and grind the following: Kuth, Khilla, Kangni, Mustard, Pine, Turmeric, Lodh, and Sarvoshadhi. Combine this powder with water from any holy place and bathe with it while meditating on God. All the planets will be pacified through this, and you will flourish in life.

### **Materials to Donate**

To appease Saturn, you should donate Saturn-related materials to worthy individuals. These materials include: Sesame (Til), Black Gram (Urad), buffalo, iron, oil, black cloth, sapphire, Horse gram (Kulthi), black cow, black flowers, shoes, musk, gold, etc.

### **Yantra**

To appease Saturn, prepare its yantra on Bhojpatra using Ashtagandha ink (a blend of Saffron, Camphor, Aloes, Tagar, Musk, and Sandalwood). Place this yantra

#### **My Company Punjabi**

Address : E-908, Saviour Green Arch, Noida Ext.

U.P. Pin : 201306

Mob : - 9540952029

Email Id : pooja@gmail.com

inside a gold or copper talisman (tabeez). Worship it with incense and lamps (dhoop-deep), attach it to a gold chain or yellow thread, and wear it on a Saturday morning during the bright half of the month.



**My Company Punjabi**

Address : E-908, Saviour Green Arch, Noida Ext.

U.P. Pin : 201306

Mob : - 9540952029

Email Id : pooja@gmail.com