



Srinivasa K M

30 Jun 1964

Model: Numerology-Report

Order No: 121792401

# Numerological Results

Model: Numerology-Report

Order No: 121792401

Date: 02/04/2026

Name Srinivasa K M  
Date of Birth 30/06/1964  
Radical No. 3  
Lucky No. 2  
Naamank 2  
Radical No.Lord Jupiter  
Lucky No. Lord Moon  
Naamank Lord Moon  
Friendly Nos. 6, 9, 2  
Evil Nos. 4, 8  
Neutral Nos. 1, 5, 7  
Sign.Years 1974,1983,1992,2001,2010,2019,2028,2037  
Benific Age 10,19,28,37,46,55,64,73  
Fav. Days Tue, Fri, Thu  
Fav. Mths Mar, Jan, Sep  
Fav.Dates 3, 12, 21, 30  
Fav.Stone Yel. Sapphire  
Other Fav.Stone Topaz, Yellow Tourmaline  
God Vishnu  
Fav. Metal Gold  
Fav. Color Yellow  
Mantra Om Kram Krim Krom Sah Bhomaye Namah  
Fav. Yantra Mars Yantra

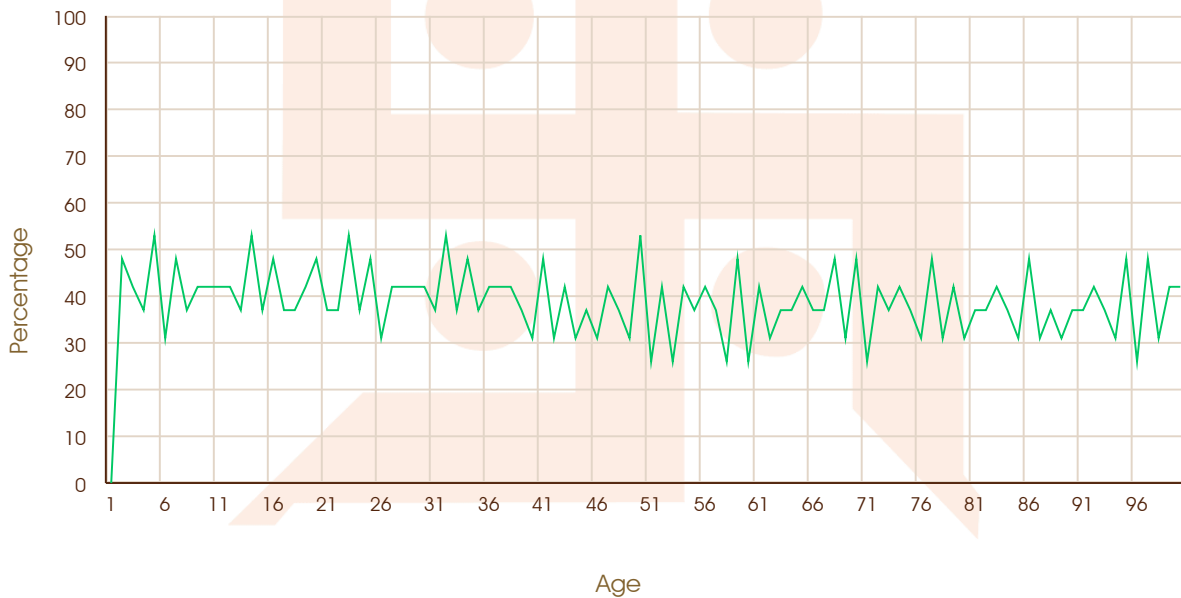
8	3	10
9	7	5
4	11	6

**Ankijyotish**

Hyderabad, Telangana, India  
7995233535

# Numerological Life Graph

The relationship created by your radical number and lucky number with the numbers related to the year of your birth and life, are shown in the graph below. From this graph you can easily know the benefic year of your life, or which year of your life is likely to be malefic for you. To create this graph, relationship between the radical and lucky numbers of the year of your life has been taken into account. If the graph shows numbers more than 60, that year likely to be important for you and if the number is less than 40, the year can be a miserable one for you.



Sign.Years                    1974,1983,1992,2001,2010,2019,2028,2037

Benific Age                    10,19,28,37,46,55,64,73

**Ankijotish**

Hyderabad, Telangana, India  
7995233535

# Numerology Prediction

Your date of birth is 30. The addition of 3 and 0 makes your Radical number 3. The ruler of Radical number 3 is Jupiter. The ruler of 0 is Shiva, indicator of universe.

Due to influence of Jupiter, you could be known as a tough disciplinarian. You will yourself desire to be disciplined and would expect discipline from others. You will be tough with subordinates. This may cause dissent among them. As you are inclined towards learning, you will be successful in your education. You will successfully carry out intellectual jobs. There will be originality in your work. You will be an expert in ruling others as you have ambitions to be a leader. You will receive acclaim in the world of religion, career and social service. Your work will reflect your logic and intellectual strengths. You will take interest in social affairs and will not harm anyone. By the effect of "0" you will attain fame as a placid, soft hearted, sweet tongued, person who follows the path of truth and who is a leader in religious affairs.

The ruler of your Lucky number 2 is Moon, due to which your imagination shall be of high order. Your intellectual standard would be high and your interest would be mainly in scholarly pursuits. Your interest in jobs involving physical labour will be less. Your luck will fluctuate like the Moon's rise and fall. Sometimes your luck will be in total darkness. What is required is patience during such days because fate will soon shine like full Moon. Your weakness is to lose patience.

Your luck will keep on changing. It will never be still at a stable point. Whole life, you will feel deficiency of Lucky. You will benefit from high officials and will be happy with money and materials. You should control your fluctuating mind, otherwise you will try to move ahead by leaving all your projects incomplete, which will impose delays in attainments of goals. Sometimes you may be unsuccessful.

Your Radical number is 3 and Lucky number is 2. The ruler of Radical number 3 is Jupiter and Lucky number 2 lord is Moon who have even relations between them. These numbers will give you merits and demerits of these planets. The rise of your fortune will be due to influences of Jupiter and Moon by jobs involving intelligence. In your profession, sometimes you will attain a good position and occasionally you will encounter a tough situation. Your field of activity will not remain one and will continue to change according to time. Your financial status will be good and you will gain wealth suitably. Your brain will assist you in your profession. You take keen interest in social affairs which makes you popular. Your

job or business will be very good in your middle age.

The rise of your fortune will begin at the age of 20 years. There will be good upswing at 29 and at 38 your career will be on peak.

Your Radical number 3 is friendly with 6 and 9. The Lucky number 2 is friend of 7 and 9. Therefore numbers 2, 3, 6, 7, 9 will be important and lucky for you. These numbers will cause few important happenings in your life.

As your Radical and Lucky numbers are on even terms with each other, their effect on your life will be favourable on you more or less. Many important events of your life will take place on dates, months, calendar years, years of age bearing your Radical and Lucky numbers.

Whenever the dates, months, years, your lucky days of week will coincide, such day will be lucky for you for beginning any work, for writing a letter or for meeting a senior official etc. If you will review the important events of your past life you will find that many such events have occurred on months, years, days of your Radical and Lucky numbers or their friendly numbers.

After analysis of the past events of your life the numbers you find are favourable for you are suitable for future planning of your life.

The months of February, March, June, July, September are important for you. You should begin your important jobs on a day when Day, Date, Month and Year are compatible with your Radical and Lucky numbers so that all are lucky for you at a time.

Similarly years of your age with a total of 2, 3, 6, 7, 9 are lucky for you.

2 . 11, 20, 29, 38, 47, 56, 65, 74

3 . 12, 21, 30, 39, 48, 57, 66, 75

6 . 15, 24, 33, 42, 51, 60, 69

7 . 16, 25, 34, 43, 52, 61, 70

9 . 18, 27, 36, 45, 54, 63, 72

Above years will be transforming for your life. Few important events of your life will happen in these years which will change the direction of your life. Few events will remain memorable.

## Adjustment of Name Number

In this world if a person does not have a name he has nothing with him. Only an appropriate name can render success. A proper name alone can give renown in the country and abroad. Therefore it is essential that a name is chosen in a manner that it can render fame, glory and prestige in society and can enable the native to be remembered for centuries with reverence. How far is your name assisting you in developing your luck and prestige, you can learn by following calculations. By a change in name your destiny can be enhanced.

**S r i n i v a s a K M**  
**3+2+1+5+1+6+1+3+1 2 4**  
**Name-Total : 29 Naamank : 2**

The sum total of your name is 29. The addition of 2 and 9 makes 11. The addition of 1 and 1 makes your Name number 2. The ruler of Name number 2 is Moon, while for 9 it is Mars and for 1 it is Sun. Therefore, your life will have mixed results of influences of all these three planets. You will be an affectionate, sentimental and art loving person. There will be many ups and downs in your life. You may have a tendency to switchover to another work while keeping your existing project incomplete. On some occasions your efforts may falter. In your difficult days, you will have to maintain patience. Only then you can achieve success. By virtue of the Sun's influence, you will be able to establish your identity as an ambitious and rising person. You will attain popularity, which will be permanent. In your field of work, your reputation will be stable.

The Name number of your name Srinivasa K M is 2. This is also your Lucky number. Both of these numbers have medium relations with your Radical number 3. Due to combined effect of these numbers, you will receive full benefits from your Lucky number. Your name will be popular in society. You will attain eminence in your work. You will be able to establish your identity as a renowned person amongst your friends and relatives. Your name will be remembered with dignity in your field of activity for a long time. Because of medium relations with Radical number you will receive help of medium order from luck. Therefore, the name that you will establish will be due to your hard work.

There is improper compatibility between your Name number and your Radical number 3 but name number is compatible with Lucky number 2. Due to non compatibility with Radical number you may not be fully successful and you will have struggles and failures in your life. It is advisable that for a blissful life your name

is compatible to other numbers. Please select a name whose Name number is compatible with Radical and Lucky numbers. The Name number should be 9 and not 8. Such name will render you worldly success. For name change, numbers 6,7,2,3 will be lucky for you while numbers 4,5 will be unfavourable.

For change in name we are giving below the method of converting english letters into numbers alongwith examples. By its help you can change your name and make necessary modifications easily and make your Name Number favourable for you. By change of name you can make your Name fortunate alongwith your Radical and Lucky numbers.

**A B C D E F G H I J K L M N O P Q R S T U V W X Y Z**

**1 2 3 4 5 8 3 5 1 1 2 3 4 5 7 8 1 2 3 4 6 6 6 5 1 7**

**For Example :-**

To reduce the number-	G A N E S H A 3+1+5+5+3+5+1=23=5	G A N E S H 3+1+5+5+3+5=22=4
No. 1. :-	R A M 2+1+4=7	R A M A 2+1+4+1=8
No. 2. :-	B I N D R A 2+1+5+4+2+1=15=6	B R I N D R A 2+2+1+5+4+2+1=17=8
No. 3. :-	R A M C H A N D 2+1+4+3+5+1+5+4=25=7	R A M C H A N D R A 2+1+4+3+5+1+5+4+2+1=28
No. 4. :-	K R I S H N A 2+2+1+3+5+5+1=19=1	K R E S H N A 2+2+5+3+5+5+1=23=5
No. 5. :-	T E W A R I 4+5+6+1+2+1=19=1	T I W A R I 4+1+6+1+2+1=15=6
No. 6. :-	A G G A R W A L 1+3+3+1+2+6+1+3=20=2	A G A R W A L 1+3+1+2+6+1+3=17=8

## Loshu Prediction

4 4	9 9	2 2
3 3 3	5 5	7 7
8 8	1 1	6 6 6

### Introduction to Loshu Grid

Loshu chart is an important part of Chinese numerology. It is based on the miraculous Lakshmi Yantra. Through this method, we understand the complete personality of a person with great simplicity and quickness only by knowing his date of birth. Through this method, we can also suggest ways to remove the harmful effect of missing digits in the chart of that person. The rows, columns and group of numbers present or absent in the chart are helpful in telling the personality of the person in detail.

### Number 1 - Once

The number one in your Loshu chart is present only once. Therefore, you are unable to express your inner feelings or are unable to express your inner thoughts. You may behave well in other areas, but when you reveal the inner part of your personality, you feel distraught and hesitate to speak your mind. You also often find it difficult to understand the other person's point of view properly. It is also a little difficult for you to appreciate the other person's point of view. Sadness and loneliness surround you easily. You take great care in collecting and storing data and facts, which leads to waste of time, and unnecessary delay in completion of work. For continuous growth and development, you need a calm and harmonious

**Ankijyotish**

Hyderabad, Telangana, India  
7995233535

environment. You are successful to a great extent in a job or business, but you also have to face some failure due to not being able to explain to others practically, or not being clear about what you say.

### **Number 2 - Once**

Two numbers appear once in your Loshu chart. Because of which you are sensitive and knowledgeable, you are proficient in extracting the essence of another person in a single glance, but misfortune hurts you too quickly, you own the unique talent of finding insincere. You are calm and sensitive, you have to take care of them while speaking to someone. Sometimes you are not able to say things properly to anyone. Anything hurts you very quickly. You are very emotional. Being very introverted in nature, you get hints about the events that will happen in the future. You lack courage, you are not able to focus your mind on anything, you are not able to take any decision quickly, you are very moody, change your nature very quickly, laugh and become serious.

### **Number 3 - Twice**

Number Three appears twice in your Loshu chart. So your imagination is intense, you are mentally attentive and active, you enjoy conventions and seem a little supernatural. You sometimes seem a little cynical and often contradicting old customs. You are a writer due to the ability to express your thoughts and give direction to your functional thought power. You are always full of energy and self-confidence. You achieve success on the basis of ability and imagination. Whatever path you are in, you make your own path successfully. You are able to express your creative imagination and thoughts in words. You are very proud. You do not like to bend in front of anyone. You do not want to take anyone's favor and do not like to interfere unnecessarily. You do not like to compromise your freedom. People with this radix are courageous, brave, powerful, unstoppable, struggling, pro-laborers and do not give up on their miseries.

### **Number 4 - Once**

Digit Four is present once in your Loshu chart. Therefore, you are proficient in practical and manual skills, you like a business in which you can work with your hands, you tease with imaginative plans and principles. You have the ability to organize others and make plans perfect for nature. You also have a keen interest in arts such as music and handicrafts. You are able to put your functionality well in front of others. You are generally tactful and are capable of solving difficult situations and serious issues with diplomacy. You keep your temperament calm

and clever in completing tasks.

### **Missing Number 5:**

A score of 5 is missing in your Loshu chart. Therefore, you experience difficulty in setting goals, and you lack versatility and will power. You fail to communicate, lack of interest in reading and lack of money. You soon leave patience, success is not easily found, because they do not have a good way of talking. Injuries and accidents are always there in life. You should always drive the vehicle carefully. You face many challenges and ups and downs in your personal life. Failure occurs in many tasks, causing upheaval in your family life. You need constant inspiration from others. In such a situation, you need to learn to set a realistic goal, and only after achieving it, move towards the next goal.

### **Number 6 - Twice**

Digit Six is present twice in your loshu chart. Therefore, you indulge in unnecessary worries of your family. Due to the mental stress that arises, such natives need more rest. You like functional works, and there are questions between beautiful things. You are often very attentive to your children, which proves to be a hindrance to their natural development. There are some challenges in family life, you have difficulty in getting family support. Even in married life, due to your restriction, a situation of differences persists, causing disputes between you and your life partner. Many times you have to stay away from home but the support of family is less and due to this, there is an irritability in your nature.

### **Missing Number 7:**

The number seven is missing in your loshu chart. Therefore, you have an indiscriminate attitude towards other people's feelings. You are cluttered in your daily life. Your work and studies are hindered. This digit is the base digit of all the digits due to being in the medium. There is no interest in things related to your spiritual or enlightenment. Due to lack of self-confidence, you do not even like to be single, excessive freedom, lack of logic and tolerance can make you unpopular. We also have to face economic crisis. At times, there is doubt about own working ability, whether you will be able to do it or not. You are prone to stomach diseases, headaches, blood disorders and lung diseases. The need is that you learn to express your feelings and live with others.

### **Missing Number 8:**

The number 8 is missing in your Loshu chart. Therefore, you are not skilled in your financial management, you are either completely careless, or more confident towards others. As a result, you suffer in money matters, lack of decision power and lack of physical means. There is also a lack of goal-setting, and the tendency to leave work unfinished, you need to learn to control natural haste, and to think before acting. You are not disciplined, you are not able to keep track of your money, such as how much earned, how much spent and what is left. You do not believe in working hard, your over-ambitious and materialistic thinking causes stress and depression for you. You do not get stability early, and want to earn money early in life. The need is that you abandon your free will, and develop the habit of thinking before doing anything.

### **Number 9 - Once**

Digit Nine is present once in your Loshu chart. Therefore, you are ambitious and have a strong desire to progress. People suddenly get attracted towards you. You achieve complete success in any work whether in the country or abroad. When you work selflessly, you have more attraction. You are always seen moving around. People of this number have been seen meeting the people of different regions, understanding them and giving them love and sympathy. Sometimes you work without any purpose and selfishness, and give true service to humanity. When you work for the benefit of others, your intelligence and unique talent and character perseverance give unforgettable results. The location of the number nine is in both the mental level and the functional line.

### **Row of Wisdom (4, 9, 2)**

Your Loshu chart has a presence of first row of 4, 9 and 2 digits. So you are a person of intellectual strength and good memory. By the effect of this number you are clear, just and skillful in analysis, but sometimes consider yourself superior to others. Most times you remain engrossed in your own tune. You do not have much attachment to your ancient traditions nor do you blindly believe in religion. You believe in getting your own destination and making your own way. In some cases you may be withdrawn, but for others you come across as a confidant. You don't believe in looks and flattery.

## Presence of Water Element : Digit 1

There is presence of water element in your loshu chart. Water represents wisdom and knowledge, water is resilient yet strong, still flowing. 1, the number is related to the sun, the water is calm yet dangerous. The surface for water is only the beginning, with the actual moves hidden in its depth. You enjoy time for your own company and internal reflection. Your characters is calm and peaceful, but have a great ability to overwhelm others, you are also fearless, courageous and self-respecting. You always reach to the top due to your hard work, job or business, you are skilled in doing any work, you look at your life in an impartial manner.

Features - You are skilled in political work, you have the ability to lead family, society, nation etc. A sharp eye, sympathy and good intermediary, firm, comfortable and flexible, gentle but strong, you possess the qualities of foresight.

Weaknesses - Self-indulgent, too passive, too much trust in others, dilemma, anxious etc. are your demerits.

## Presence of Earth Element: 2, 5 or 8 digits

There is presence of earth element in your loshu chart. Earth is stable and intermediary. It is a natural peacekeeper. The earth is patient, considerate and calm. While the Earth is warm and nourished, it can also be easily self-centered because it believes that it is the center of everything. Earth is protective like it protects roots, which keeps everything together. People of this element have a large amount of sympathy and find themselves constantly concerned about the happiness of others. Digit 2 belongs to the moon, digit 5 belongs to Mercury and digit 8 belongs to Saturn, such people are wealthy, have their own house attached to the land.

Features - Such people are stable, serious, practical, logical, compassionate, caring, sympathetic, responsive, loyal and are honest, nurturing, organized and good at planning, strong and enduring.

Weaknesses - Over-protected, stubborn, congenital miser, conservative, have trouble taking risks.

## Presence of Wood Element: 3 or 4 digits

There is a presence of wood element in your loshu chart. The wood is generous and spacious and takes care of others deeply. With bamboo, wood is strong, still flexible and a natural born leader. Its roots dig deep into the earth, however, wood also requires moisture to survive. Wood features are often

associated with sexuality and patience. However, to balance it, wood can also be intrusive and aggressive. In loshu wood is represented by 3 & 4. 3 number is related to Jupiter and 4 digit is related to Rahu. Such individuals are constantly looking to expand and grow. Able to perform complex to complex tasks, you get your work done easily.

Features- They are very smart, have good understanding, warm, affable, kind, flexible and adaptable, stable and practical, generous.

Weaknesses - Do not have a good sense of boundaries or limitations, become too passive, rely too much on others.

### **Presence of Metal Element: 6 or 7 digits**

There is presence of metal element in your loshu chart. Metal is a diamond found in the mines, it is the breath of life, people belonging to metal element respect themselves, and respect others as well, 6 number belongs to Venus and 7 is related to Ketu. People affected by this element are strong and tough, but they adapt and change when pressed. The metal is inscribed, hardened and fixed without its loss. People with this element are minimal, enjoy the simplicity of an organized and clean life, although metal on the downside can also be powerful and controlled. In fact your life requires complex or unnecessary feelings.

Features- You are adventurous, ambitious, independent minded, driven on a set goal, disciplined, focused, possessing high morality and high standards.

Weaknesses- Lack of communication skills, stubbornness, sometimes undervaluation, cruel, ruthless, easily cut ties, overcrowding, etc. are your weaknesses.

### **Presence of Fire Element: Digit 9**

There is presence of fire element in your loshu chart. Fire is always directed upwards and its energy is never exhausted. It is persistent and strong, however, it also spreads and wanders easily. There are thrill seekers with fire in the form of an element, wandering from one adventurous moment to the next. Fire is often associated with heat, passion and the need to create. However, on the reverse side, it may also be related to aggression, impatience, and destruction. While fire can provide heat, it can also burn. Fire cannot happen on its own. Although it is bright and exciting. Stability of wood is needed to accomplish this digit 9 is related to Mars, So your body is strong, will power is strong, you are brave, courageous and

work with full power, you have good decision making ability.

Features- You are passionate and enthusiastic, creative, compassionate and charismatic, effortless and courageous, always accepting the challenge, warm and determined.

Weaknesses - Attention cravings, patients, manipulators, quarrelsome, mood-friendly, aggressive, impulsive and unstable, tend to live alone.



**Ankkyotish**

Hyderabad, Telangana, India  
7995233535

# Numerological Remedies

## Favourable Time

According to western view, the Sun remains in Sagittarius from 21st November to 20th December, in Pisces from 19th February to 20th March and in Cancer from 21st June to 20th July. However as per the Indian thought the Sun in Sagittarius from 15th December to 13th January, in Pisces from 14th March to 12th April and in Cancer from 16th July to 16th August. The Sagittarius and Pisces are residence and own houses of the Jupiter. The Cancer is exalted placed of Jupiter.

Therefore above periods are most suitable for persons under the influences of Radical number 3. It will be beneficial for you to initiate any important work during these days.

## Favourable Day

The Thursday, Friday and Tuesday are auspicious days for you. If these days are falling on your favourable dates then such a day will be beneficial for you.

## Favourable Dates

The dates 3, 6, 9, 12, 15, 18, 21, 24, 27 and 30 are lucky for you for initiating any new work, to meet an important person or to write a letter. If you work during above dates, success will be achieved with more ease.

## Unfavourable Dates

The dates 4, 8, 13, 17, 22, 26 and 31 may be adverse for you. It may not be in your interest to perform any new or important work during these dates.

## Friendship & Partnership

You should develop friendship or partnership with a person born on dates 3, 6, 9, 12, 15, 18, 21, 24, 27 and 30 or during the periods 15th December to 13th January, 13th March to 13th April or 16th July to 16th August. Such persons will prove to you favourable, cooperative and loyal. A friendship with these persons will prove stable and long lasting for you. They will be appropriate for your job, business or partnerships.

## Love & Marriage

At the time of your marriage or an affair you should see that your partner is with Radical numbers 3, 6 or 9 or was born on dates 3, 6, 9, 12, 15, 18, 21, 24, 27,

or 30. The person born on these dates will prove to be lucky and a good companion for you.

### **Favourable Color**

The colour favourable for you is pink, light or bright. It should not be dark pink. You should choose curtains, bed sheets, pillows, and mats of your drawing room of this colour. Preferably you should keep a pink handkerchief. Whenever you are indisposed wear pink clothes which will keep you fit.

### **Vaastu & Niwas**

To live in a house with Radical and name numbers 3 will be lucky for you. The North-East direction is always favourable for you. Therefore you should build your house in the North-East part of the city. A job or business in this direction will be lucky for you. The brown, yellow and golden clothes will enhance your personality. Similarly selection of these colours for walls, curtains and furniture will bring harmony in your domestic life.

### **Lucky Vehicle Number**

During a journey if you book a room in a hotel, you should try to have it's number as your radical number or friendly to your Radical number. Your radical number is 3. It's friendly numbers are 6 and 9. Your room number should be  $102=3$  etc and if you register a vehicle then the auspicious number is  $5232 = 3$  etc. If you travel in a vehicle with similar numbers your journey will be pleasant.

### **Health & Disease**

Whenever you suffer from a disease it may be from skin ailments, Eczema, Itching, Semen Loss, poisoning, Bile Problem, Colic, Nerves weakness, Undue excitement, Weakness of private parts, disinterest in sex, blood disorders etc. During the periods of disease, bad days and emergencies you should worship Lord Vishnu, observe fasts on Full moon and listen Satyanarayan vrat katha.

### **Occupation**

The occupations suitable for you are : Textile industry, Restaurant, Hotel, Paan Shop, Teaching, Lecturer, Professor, Ambassador, Law, Jurist, Secretary, Messenger, Clerk, Medicine, Banking, Share Broker, Grain Merchant, Advertising, Actor, Salesman, Typist, Steno, Shipping, Police, Philosopher, Manager and trade connected with water.

**Ankijyotish**

Hyderabad, Telangana, India  
7995233535

## Fast

Observe fast on Thursdays for nullifying the malefic influence of Jupiter. Wear yellow clothes, eat yellow food and donate yellow goods for this fast. This fast should be observed for 3 years or 1 year or for 16 Thursdays. Recite Guru mantra on Putrajeevi Mala (Beads of Nagali Putrajiva) according to your capacity.

## Favourable Stones or Substitute Stones

The main stone for you is Topaz. If you are unable to get it then wear Golden quartz, Tiger eye etc. Wear the stone of 4-5 carats in a golden ring in right hand first finger with the stone touching the skin of finger.

## Favourable Lord

Worship Jupiter or Lord Vishnu. Recite the 12 letters mantra of Vishnu "Om Namoh Bhagvate Vasudevay" every day 108 times. Listen satyanarayan katha on full Moon. By these procedures you will be rid of diseases and problems. If you find it difficult you can look at the picture of Lord Vishnu every morning.

## Grah Gayatri Mantra

In order to enhance the benefic influence of Jupiter recite every morning 11, 21 or 108 times.

Mantra :

"Om Angirasay Vidmahe Divyadehay Dheemahi Tanoo Jeevah Prachodyat".

## Grah Dhayan Mantra

Every morning after getting up meditate on Jupiter, establish its picture in your mind and recite.

Mantra :

Devanaam Cha Rishinam cha Gurum Kanchan Sannibham,  
Buddhibhootam Trilokesham Tam Namami Brihaspatim.

## Grah Jaap Mantra

In order to appease malefic Jupiter, you should recite Guru mantra. The desired results are obtained by reciting it 108 times. The complete course is of 108 x 108 times (108 malas). You will yourself be able to see the effect of this jaap.

Mantra :

## Ankijyotish

Hyderabad, Telangana, India  
7995233535

"Om Gram Greem Grom Sah Guruve Namah" 10000 times.

### **Herbal Wearings**

Bring 1inch long root of orange or banana tree on any Thursday. Wrap it with a yellow thread and wear on your right hand or keep it in a Gold or Brass tabeez (talisman) and wear on your neck. This will reduce the ill effects and increase good effects of Jupiter.

### **Herbal Bath**

On every Thursday take in a bucketful water powdered mixture of Mulethi (liquorice), white mustard, malti flower ( a kind of jasmine) etc and bathe with it. This will relieve you of all diseases. This herbal bath will give a new shine to your skin. The malefic effects of Jupiter will get reduced and your glory and influence will rise. For appeasing all planets take the powdered mixture of kuth, khilla, kangni, mustard, pine, turmeric, lodh and sarvoshadhi. Mix it with the water of a holy place and take bath with it while remembering God.

### **Materials to Donate**

For appeasement of Jupiter donate to a worthy man following materials of Jupiter. Yellow clothes, Gold, Turmeric, Ghee, Yellow flowers, Yellow grains, Topaz, Horse, Books, Honey, Salts, Sugar, Land, Chatra (umbrella of Gold or Silver). You will benefit.

### **Yantra**

For appeasement of Jupiter, write Guru Yantra by ink of ashtagandh (saffron, Camphor, Aloes, Tagar, Musk, Amber, GoroChan, Red or White Sandal). Keep this yantra in Gold or Copper tabeez ( a talisman), worship with dhoop - deep, attach with golden chain or with yellow thread and wear on a Thursday morning of Shukala Paksha (Bright half of month).

**Ankkyotish**

Hyderabad, Telangana, India  
7995233535