



Shivani

24 Aug 1989

Model: Numerology-Report

Order No: 119811601

Numerological Results

Model: Numerology-Report

Order No: 119811601

Date: 16/10/2025

Name Shivani
Date of Birth 24/08/1989
Radical No. 6
Lucky No. 5
Naamank 4
Radical No.Lord Venus
Lucky No. Lord Mercury
Naamank Lord Ura/Rah
Friendly Nos. 3, 9, 5
Evil Nos. 1, 8
Neutral Nos. 2, 4, 7
Sign.Years 2004,2013,2022,2031,2040,2049,2058,2067
Benific Age 15,24,33,42,51,60,69,78
Fav. Days Fri, Thu, Tue
Fav. Mths Mar, Jan, Sep
Fav.Dates 6, 15, 24
Fav.Stone Diamond
Other Fav.Stone Wht.Zircon,Opel
God Devi
Fav. Metal Silver
Fav. Color White
Mantra Om Dram Drim Drom Sah Shukraye Namah
Fav. Yantra Venus Yantra

11	6	13
12	10	8
7	14	9

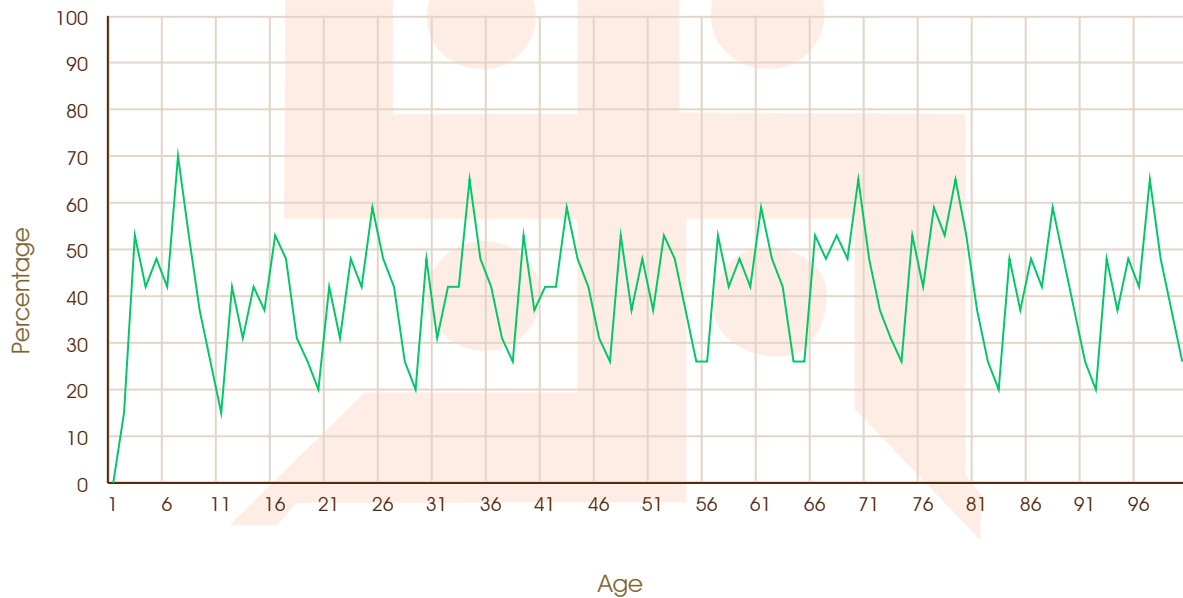
Shree Shree 1008 Mahamandleshwar Paramhans Daati Maharaj

Shri Sidh Shakti Peeth Shanidham Trust
Shree Shani Tirth Kshetra Asola, Fatehpur Beri, Chhatterpur, New Delhi 110074

+919871964972, +91981539237, +919116141210, +919116141211
www.shanidham.org, www.facebook.com/shreeshanidham, www.daati.com
Satumpublicatins@gmail.com

Numerological Life Graph

The relationship created by your radical number and lucky number with the numbers related to the year of your birth and life, are shown in the graph below. From this graph you can easily know the benefic year of your life, or which year of your life is likely to be malefic for you. To create this graph, relationship between the radical and lucky numbers of the year of your life has been taken into account. If the graph shows numbers more than 60, that year likely to be important for you and if the number is less than 40, the year can be a miserable one for you.



Sign.Years 2004,2013,2022,2031,2040,2049,2058,2067

Benific Age 15,24,33,42,51,60,69,78

Shree Shree 1008 Mahamandleshwar Paramhans Daati Maharaj

Shri Sidh Shakti Peeth Shanidham Trust
Shree Shani Tirth Kshetra Asola, Fatehpur Beri, Chhatterpur, New Delhi 110074

+919871964972, +91981539237, +919116141210, +919116141211
www.shanidham.org, www.facebook.com/shreeshanidham, www.daati.com
Satumpublicatins@gmail.com

Numerology Prediction

Your date of birth is 24. The addition of 2 and 4 makes your Radical number 6. The ruler of Radical number 6 is Venus, while ruler of number 2 is Moon and of 4 it is Hershel (Uranus). All of these three planets will cast their spell on you.

By the influence of Radical number 6, you will be equipped with an attractive personality. You will have high intensity to attract others. You will have a good taste for beauty. Attraction towards opposite sex will be abundant in you. You will relish spending time with handsome men, women and will strive to develop permanent relationships with them.

Your interest will comprise of fine arts and a related field may be adopted by you as a hobby. A beautiful, well-decorated house, even if it is small, will enthrall you. You will not lag behind in welcoming and treating well your guests. There will be slight obstinacy in you. This may harm you on occasions. Therefore, you should take a major decision after careful thought and advice of well wishers. Competition may arouse your envy. You will work hard to achieve success and will be victorious in competition.

Your intolerance towards rivals may harm you sometimes. The influences of Moon and Hershel will keep your schedule changing. Your social status will also remain fluctuating. On occasions you will feel elated while sometimes you may feel dejected. It will be better if you keep yourself away from highly imaginative and destructive activities.

As Mercury is ruler of your Lucky number 5, your rise in life will be due to your expertise and judgment. Mercury bestows commerce and commercial art. It will impart good advancement in writing, crafts, medicine, accountancy etc. Your commercial acumen will be good. You will be an expert in conversation and logic but will talk too much.

You will make new schemes everyday in your job, which will lead you to new heights. You will be an expert of business. Everyday chores will be completed speedily by you. To extract work out of others will be your speciality. Because of your commercial acumen, you will be drawn towards collection of money and according to need you will accumulate wealth from time to time. Your economic status will be average. You will handle all your occupational affairs well by using your ample knowledge of law. People will be forced to accept your judgment.

Your Radical number is 6 and Lucky number 5. The ruler of Radical

number 6 is Venus and Lucky number 5 lord is Mercury. These numbers have even relations between them. Due to this reason you will have mixed results of Radical and Lucky numbers. You will earn your livelihood by using your skills in any form of arts. You will have significant achievements in the field of arts which will also render you good money. You possess a tender heart and you are skilled in mixing with people. You are inclined more towards collecting luxurious goods than accumulating money. This might consume major part of your income though means for comfortable living will be available to you in plenty. You will have high social status with good esteem and facilities. The area of people knowing you will be quite wide and you will be highly popular in social circles.

The rise of your fortune will begin at the age of 23 years. There will be good upswing at 32 and at 41 your career will be on peak.

Your Radical number 6 is friendly with 3 and 9. The Lucky number 5 is friend of 3 and 9. Therefore numbers 3, 5, 6, 9 will be important and lucky for you. These numbers will cause few important happenings in your life.

As your Radical and Lucky numbers are on even terms with each other, their effect on your life will be favourable more or less. Many important events of your life will take place on dates, months, calendar years, years of age bearing your Radical and Lucky numbers.

Whenever the dates, months, years, your lucky days of week will coincide, such day will be lucky for you for beginning any work, for writing a letter or for meeting a senior official etc. If you will review the important events of your past life you will find that many such events have occurred on months, years, days of your Radical and Lucky numbers or their friendly numbers.

After analysis of the past events of your life the numbers you find are favourable for you are suitable for future planning of your life.

The months of March, May, June, September are important for you. You should begin your important jobs on a day when Day, Date, Month and Year are compatible with your Radical and Lucky numbers so that all are lucky for you at a time.

If total of a calendar year is 3, 5, 6, 9, this year will be lucky for you.

Similarly years of your age with a total of 3, 5, 6, 9 are lucky for you.

3 . 12, 21, 30, 39, 48, 57, 66, 75

5 . 14, 23, 32, 41, 50, 59, 68

6 . 15, 24, 33, 42, 51, 60, 69

9 . 18, 27, 36, 45, 54, 63, 72

Above years will be transforming for your life. Few important events of your life will happen in these years which will change the direction of your life. Few events will remain memorable.



Shree Shree 1008 Mahamandleshwar Paramhans Daati Maharaj

Shri Sidh Shakti Peeth Shanidham Trust
Shree Shani Tirth Kshetra Asola, Fatehpur Beri, Chhatterpur, New Delhi 110074

+919871964972, +91981539237, +919116141210, +919116141211
www.shanidham.org, www.facebook.com/shreeshanidham, www.daati.com
Saturnpublicatins@gmail.com

Adjustment of Name Number

In this world if a person does not have a name he has nothing with him. Only an appropriate name can render success. A proper name alone can give renown in the country and abroad. Therefore it is essential that a name is chosen in a manner that it can render fame, glory and prestige in society and can enable the native to be remembered for centuries with reverence. How far is your name assisting you in developing your luck and prestige, you can learn by following calculations. By a change in name your destiny can be enhanced.

S h i v a n i

3+5+1+6+1+5+1

Name-Total : 22 Naamank : 4

The Sum total of your name is 22. The addition of 2 and 2 makes your Name number 4. The lord of Name number 4 is Hershel (Uranus) and for 2 it is Moon. The merits and demerits of these planets will influence your life. You will have sudden gains in different fields of your life. You will get more acclaim and esteem than wealth. You will prefer desk jobs more than physical labour. You will develop good skills in work involving intelligence. There will be many ups and downs in your life. You should give a cool thought to your plans. There will be plenty of opportunities for success in your life. Hurries will cause failure. Ailments related to cold weather and blood may trouble you on occasions. Your social circle will be top class.

Your Name number Shivani keeps medium relations with your Radical number 6, but it has enmity with your Lucky Number 5. Under these circumstance you may not be able to reap full benefits from your Name number. The medium relations with Radical number will allow your name to be successful, while animosity with Lucky number will spell failure. It is therefore essential for you to change your name. Please change your name in such a manner that many letters of the name are not altered while good rapport is established with your Radical and Lucky numbers.

The number of your name does not find favour with your Radical number 6 as well as your Lucky number 5. Please go for a change in name for better future. Please select a name such that it's Name number is 9 for compatibility with Radical and Lucky numbers and is not 1. Such a compatible name will open the doors of stalled progress and you will attain worldly success totally. For change in name, numbers 5,3,6 will be lucky for you while numbers 2,4,8 are undesired.

For change in name we are giving below the method of converting english letters into numbers alongwith examples. By its help you can change your name and make necessary modifications easily and make your Name Number favourable for you. By change of name you can make your Name fortunate alongwith your Radical and Lucky numbers.

A B C D E F G H I J K L M N O P Q R S T U V W X Y Z

1 2 3 4 5 8 3 5 1 1 2 3 4 5 7 8 1 2 3 4 6 6 6 5 1 7

For Example :--

To reduce the number-GANESHA

$$3+1+5+5+3+5+1=23=5$$

GANESH

$$3+1+5+5+3+5=22=4$$

No. 1. :--

RAM

$$2+1+4=7$$

RAMA

$$2+1+4+1=8$$

No. 2. :--

BINDRA

$$2+1+5+4+2+1=15=6$$

BRINDRA

$$2+2+1+5+4+2+1=17=8$$

No. 3. :--

RAMCHAND

$$2+1+4+3+5+1+5+4=25=7$$

RAMCHANDRA

$$2+1+4+3+5+1+5+4+2+1=28=9$$

No. 4. :--

KRISHNA

$$2+2+1+3+5+5+1=19=1$$

KRESHNA

$$2+2+5+3+5+5+1=23=5$$

No. 5. :--

TEWARI

$$4+5+6+1+2+1=19=1$$

TIWARI

$$4+1+6+1+2+1=15=6$$

No. 6. :--

AGGARWAL

$$1+3+3+1+2+6+1+3=20=2$$

AGARWAL

$$1+3+1+2+6+1+3=17=8$$

Loshu Prediction

4 4	9 9 9	2 2
	5 5	7
8 8 8	1 1	6 6

Introduction to Loshu Grid

Loshu chart is an important part of Chinese numerology. It is based on the miraculous Lakshmi Yantra. Through this method, we understand the complete personality of a person with great simplicity and quickness only by knowing his date of birth. Through this method, we can also suggest ways to remove the harmful effect of missing digits in the chart of that person. The rows, columns and group of numbers present or absent in the chart are helpful in telling the personality of the person in detail.

Number 1 - Once

The number one in your Loshu chart is present only once. Therefore, you are unable to express your inner feelings or are unable to express your inner thoughts. You may behave well in other areas, but when you reveal the inner part of your personality, you feel distraught and hesitate to speak your mind. You also often find it difficult to understand the other person's point of view properly. It is also a little difficult for you to appreciate the other person's point of view. Sadness and loneliness surround you easily. You take great care in collecting and storing data and facts, which leads to waste of time, and unnecessary delay in completion of work. For continuous growth and development, you need a calm and harmonious

environment. You are successful to a great extent in a job or business, but you also have to face some failure due to not being able to explain to others practically, or not being clear about what you say.

Number 2 - Once

Two numbers appear once in your Loshu chart. Because of which you are sensitive and knowledgeable, you are proficient in extracting the essence of another person in a single glance, but misfortune hurts you too quickly, you own the unique talent of finding insincere. You are calm and sensitive, you have to take care of them while speaking to someone. Sometimes you are not able to say things properly to anyone. Anything hurts you very quickly. You are very emotional. Being very introverted in nature, you get hints about the events that will happen in the future. You lack courage, you are not able to focus your mind on anything, you are not able to take any decision quickly, you are very moody, change your nature very quickly, laugh and become serious.

Missing Number 3:

There is absence of number three in the Loshu chart, as a result, the grace of Guru and the Gods is less. There is a lack of confidence, you are not able to think logically when you are distracted, due to which you experience difficulty in expressing yourself. You also have the tendency to underestimate your ability and not express yourself. In times of calamity, you do not think properly and only after working hard, the objective is attained. You are lost inside your imaginations, you are not able to make good relations with others. You cannot think very far, your mental capacity is weak. Because of which you have to face many difficulties. You have less imagination and knowledge. You do not even have foresight, are not able to fight the situation in mental, physical, and financial constraints. You get upset quickly, you are not interested in the subject of spirituality and knowledge. What you need is that you accept yourself and move forward and gradually increase self-confidence and self-esteem.

Number 4 - Once

Digit Four is present once in your Loshu chart. Therefore, you are proficient in practical and manual skills, you like a business in which you can work with your hands, you tease with imaginative plans and principles. You have the ability to organize others and make plans perfect for nature. You also have a keen interest in arts such as music and handicrafts. You are able to put your functionality well in front of others. You are generally tactful and are capable of solving difficult

situations and serious issues with diplomacy. You keep your temperament calm and clever in completing tasks.

Number 5 - Once

Number Five is present once in your loshu chart. So you are emotionally balanced. You are compassionate, sensitive to others and possessing an innate nature, by being able to inspire and encourage others, you achieve more than possible success. You are capable of doing any work successfully due to sharp intellect and mind and ability. You generally lead a good life, you are interested in everything that is new, you earn money from a wide variety of professions. Sharp skills, perfect in mathematics and your ability to calculate is fast. You look at all subjects logically. You are also successful in commerce and trade. You are a great speaker, achieve amazing success in the field of communication.

Number 6 - Once

Digit Six is present once in your Loshu chart. Therefore, you have a lot of affection for your home and relatives. You like to carry out your family responsibilities and enjoy domestic responsibilities. You have creative ability and you are a master of extreme functional power. You are popular in the society, you are clever in getting the most serious secret out of the front. You are completely worldly and succeed in reaching your goal. You are diligent, well-organized and decent. You are not satisfied with a single livelihood, business is predominant in your vision, even if you work, and you are successful in Job. You are good parent and every member of the family comes to consult at the time of calamity. You also have a strong feeling of insecurity, and you are undoubtedly engrossed in the worry of lawlessness and aloneness.

Missing Number 7:

The number seven is missing in your loshu chart. Therefore, you have an indiscriminate attitude towards other people's feelings. You are cluttered in your daily life. Your work and studies are hindered. This digit is the base digit of all the digits due to being in the medium. There is no interest in things related to your spiritual or enlightenment. Due to lack of self-confidence, you do not even like to be single, excessive freedom, lack of logic and tolerance can make you unpopular. We also have to face economic crisis. At times, there is doubt about own working ability, whether you will be able to do it or not. You are prone to stomach diseases, headaches, blood disorders and lung diseases. The need is that you learn to express your feelings and live with others.

Number 8 - Twice

Number Eight appears twice in your loshu chart. Therefore, you are highly conscious and virtuous, before you accept anything. You prioritize self-realization over realization. You are a master of steady wisdom and thoughts. After making decisions, you experience difficulty in changing your perspective. You are ambitious, and pursue high position. Your intellect is sharp, you are rational, do everything thoughtfully, and have a special interest in religious texts. You have the ability to successfully conduct large projects. But your luck is less with you. You have to work hard and build your height. Through continuous struggle, your inner knowledge is awakened and later you develop a non-partisan leadership capacity, which increases your office prestige.

Numbers 9 - Twice

Nine digit appears twice in your Loshu chart. So you are idealistic, intelligent but sometimes problematic for others, but you are highly intelligent. Therefore, sometimes people look at you who are not as intelligent as them. You are especially successful in works that require imagination, artistry, and creativity. Sometimes you work without any purpose and selfishness, and act as true servant of humanity. You get good opportunities and help from others naturally, with which your life is successful, at the same time useful for others. Often you are under the influence of elders of the house, so it is necessary that you interact with people from all strata of society.

Presence of the Outer four Daigonal digits (4, 8, 6, 2)

Four out of the four diagonal digits 4, 8, 6 and 2 are present in your Loshu chart. It is considered a very good situation, you have artistic and creative abilities. You are fortunate, happy, intelligent and skilled in every task, you are always full of energy and confidence. Wherever you are in a profession, full of ability and imagination, you successfully make your own path. You are well organized, self disciplined, and hard working. Your colleague or relatives feel very comfortable and intimate in your company. You are able to work hard, because of your ability, knowledge, and creative ability, you usually become teachers, philosophers, theologians, scientists, ministers, writers etc. occupying higher positions. You have the ability to successfully conduct large projects. You do your work with seriousness in any field, and you are going to reach it. Through continuous struggle, your inner knowledge is awakened, out of the four digits, point 4 represent Rahu, point 8 Saturn, point 6 Venus and digit 2 is represented by the moon. With the presence of these four digits, many auspicious yogas are formed, which work to give you good

success in life.

Row of Wisdom (4, 9, 2)

Your Loshu chart has a presence of first row of 4, 9 and 2 digits. So you are a person of intellectual strength and good memory. By the effect of this number you are clear, just and skillful in analysis, but sometimes consider yourself superior to others. Most times you remain engrossed in your own tune. You do not have much attachment to your ancient traditions nor do you blindly believe in religion. You believe in getting your own destination and making your own way. In some cases you may be withdrawn, but for others you come across as a confidant. You don't believe in looks and flattery.

Row of Prosperity (8, 1, 6)

There is presence of bottom row of 8, 1 and 6 digits in your loshu chart. Therefore, you demonstrate excellence in business and commerce related tasks. You are often not interested in the higher qualities of life, only interested in earning money. You are social, well thought out and sensitive. You achieve a good amount of material success, but you often do so by ignoring the sensibilities and needs of others. You cannot compromise your freedom in any situation. You have a progressive and winning mind and attitude in every situation. You are a master of versatility and believe in finding the answer to any question with great patience. You know how to inspire those around you. It is an indicator of talent and prosperity. You get good success in legal and public works or sales work. You lack the power to understand others. It is necessary to develop the art of changing yourself to adapt to the situation by rising out of your weaknesses and sacrificing harshness.

Column of Determination (1, 5, 9)

This yoga shows will power, there is presence of mid column containing 1, 5 and 9 digits in your loshu chart. So you have a lot of will power. Condemned, adept and firm in intent, no matter what the situation in life, you do not give up, you have the ability to fight the circumstances. Due to this you touch heights in life. You have a solid idea on various subjects. This number is considered to be a symbol of success, because until you reach the set goal, you persevere in your work. You never see a difficult time. If you are asked how you are, you will always answer that very well, even if you earn crores of rupees, your feet remain on the ground. You cannot be beat mentally, you get good success in life. You have a sharp brightener on their face, you have good intelligence, and your way of talking is also good, brain power is also good.

Diagonal of Emotional Balance (4, 5, 6)

There is presence of diagonal containing 4, 5 and 6 digits in your loshu chart, so you are compassionate and attentive. You often adopt a livelihood in which you can help others, you are sensitive and often even intuition, you own the divine power to understand the need of others. In your teenage years you seem shy, even in childhood, you are calm, gentle and soft-hearted. You are successful in handling any situation due to your effective nature and good communication skills. You can overcome any situation that arises with your ability to hear. You take a decision only after thinking deeply while remaining balanced, just and fair in any situation, and achieve special success in life. This is the ultimate combination, in such combination a person becomes king from the smallest rank. No matter what field you go to, you will definitely get success.

Diagonal of Determination (2, 5, 8)

Your Loshu chart has a presence of diagonal of 2, 5 and 8 digits. Therefore, you are patient, persistent and determined, you are a respected, unequaled, equipped and influential person. You get leadership opportunities in your field. You live in the right time, and are active in a decisive way, you are an independent darling. Never ignore the goal, only your willpower helps you to fight the troubles. Under this power, determination, confidence, continuous effort to work and perseverance etc. are included. This power generates an unprecedented splendor on your mouth and brings the magic of hypnosis to the eyes. By firming the resolution, you get things according to your thinking. Determination and intellectual balance are two of your powers, on whose strength you are able to face even the most difficult situation.

Presence of Water Element : Digit 1

There is presence of water element in your loshu chart. Water represents wisdom and knowledge, water is resilient yet strong, still flowing. 1, the number is related to the sun, the water is calm yet dangerous. The surface for water is only the beginning, with the actual moves hidden in its depth. You enjoy time for your own company and internal reflection. Your characters is calm and peaceful, but have a great ability to overwhelm others, you are also fearless, courageous and self-respecting. You always reach to the top due to your hard work, job or business, you are skilled in doing any work, you look at your life in an impartial manner.

Features - You are skilled in political work, you have the ability to lead family, society, nation etc. A sharp eye, sympathy and good intermediary, firm,

comfortable and flexible, gentle but strong, you possess the qualities of foresight.

Weaknesses - Self-indulgent, too passive, too much trust in others, dilemma, anxious etc. are your demerits.

Presence of Earth Element: 2, 5 or 8 digits

There is presence of earth element in your loshu chart. Earth is stable and intermediary. It is a natural peacekeeper. The earth is patient, considerate and calm. While the Earth is warm and nourished, it can also be easily self-centered because it believes that it is the center of everything. Earth is protective like it protects roots, which keeps everything together. People of this element have a large amount of sympathy and find themselves constantly concerned about the happiness of others. Digit 2 belongs to the moon, digit 5 belongs to Mercury and digit 8 belongs to Saturn, such people are wealthy, have their own house attached to the land.

Features - Such people are stable, serious, practical, logical, compassionate, caring, sympathetic, responsive, loyal and are honest, nurturing, organized and good at planning, strong and enduring.

Weaknesses - Over-protected, stubborn, congenital miser, conservative, have trouble taking risks.

Presence of Wood Element: 3 or 4 digits

There is a presence of wood element in your loshu chart. The wood is generous and spacious and takes care of others deeply. With bamboo, wood is strong, still flexible and a natural born leader. Its roots dig deep into the earth, however, wood also requires moisture to survive. Wood features are often associated with sexuality and patience. However, to balance it, wood can also be intrusive and aggressive. In loshu wood is represented by 3 & 4. 3 number is related to Jupiter and 4 digit is related to Rahu. Such individuals are constantly looking to expand and grow. Able to perform complex to complex tasks, you get your work done easily.

Features- They are very smart, have good understanding, warm, affable, kind, flexible and adaptable, stable and practical, generous.

Weaknesses - Do not have a good sense of boundaries or limitations, become too passive, rely too much on others.

Presence of Metal Element: 6 or 7 digits

There is presence of metal element in your Ioshu chart. Metal is a diamond found in the mines, it is the breath of life, people belonging to metal element respect themselves, and respect others as well, 6 number belongs to Venus and 7 is related to Ketu. People affected by this element are strong and tough, but they adapt and change when pressed. The metal is inscribed, hardened and fixed without its loss. People with this element are minimal, enjoy the simplicity of an organized and clean life, although metal on the downside can also be powerful and controlled. In fact your life requires complex or unnecessary feelings.

Features- You are adventurous, ambitious, independent minded, driven on a set goal, disciplined, focused, possessing high morality and high standards.

Weaknesses- Lack of communication skills, stubbornness, sometimes undervaluation, cruel, ruthless, easily cut ties, overcrowding, etc. are your weaknesses.

Presence of Fire Element: Digit 9

There is presence of fire element in your Ioshu chart. Fire is always directed upwards and its energy is never exhausted. It is persistent and strong, however, it also spreads and wanders easily. There are thrill seekers with fire in the form of an element, wandering from one adventurous moment to the next. Fire is often associated with heat, passion and the need to create. However, on the reverse side, it may also be related to aggression, impatience, and destruction. While fire can provide heat, it can also burn. Fire cannot happen on its own. Although it is bright and exciting. Stability of wood is needed to accomplish this digit 9 is related to Mars, So your body is strong, will power is strong, you are brave, courageous and work with full power, you have good decision making ability.

Features- You are passionate and enthusiastic, creative, compassionate and charismatic, effortless and courageous, always accepting the challenge, warm and determined.

Weaknesses - Attention cravings, patients, manipulators, quarrelsome, mood-friendly, aggressive, impulsive and unstable, tend to live alone.

Numerological Remedies

Favourable Time

According to western view the sun is in Taurus from 21st April to 21st May and in Libra from 24th September to 13th October. According to Indian view these periods are 13th May to 14th June and from 17th October to 13th November. These signs belong to Venus and 14th March to 12th April i.e. in Pisces, the Venus is exalted. Therefore above mentioned periods are lucky for persons belonging to Radical number 6 for starting any new work or for an important work.

Favourable Day

For you the days of Tuesday, Thursday and Friday are lucky. If your lucky dates also fall on these days then such days will be very lucky.

Favourable Dates

The dates 3, 6, 9, 12, 15, 18, 21, 24, 27 and 30 are lucky for you. You should undertake your important jobs on these dates.

Unfavourable Dates

The dates 1, 8, 10, 17, 19, 26 and 28 are not lucky for you. Don't undertake any new or important work on these dates.

Friendship & Partnerships

Keep friendship with people who were born on dates 3, 6, 9, 12, 15, 18, 21, 24, 27 and 30 or during the period 13th May to 14th March or 14th March to 13th April. Such persons will prove their friendship during your good-bad days and will also help you in your job or business.

Love & Marriage

The person born on dates 3, 6, 9, 12, 15, 18, 21, 24, 27 and 30 whose Radical number are from 3, 6, or 9 will be suitable for you for an affair or marriage. They will also help you in your success in your job or business.

Favourable Color

The lucky colors for you are light blue, sky colour, dark blue and light pink. The blue should preferably be light and if possible choose walls of house, bed sheets etc of these colors. For favourable change in health, wear clothes of these colors. If possible always carry with you a handkerchief of these colors for good

results.

Vaastu & Niwas

If you desire to build your own house, select correct direction for it. For you South - East (Agni kon) is good. If the number of house is from 3, 6 or 9, it will be good. Reside in South-East of the city or South-East portion of your house. This will be good for you. If you follow these rules in your employment it will be beneficial for you. The color of your house or furniture should be light blue or sky blue.

Lucky Vehicle Number

For a joyous journey select numbers compatible with your Radical number and its friendly number. The friendly numbers of Radical number 6 are 3, 9. Therefore you should select these numbers for vehicle or railway seat etc. Similarly the number of room for your stay should be 105 = 6 etc. If you buy a vehicle of your own then its registration number should be 3, 6 and 9 such as number 5235 = 6 etc. Such vehicle will be lucky for you.

Health & Disease

You may suffer from diseases such as Lungs ailments, semen weakness, Nervous debility, chest problem, Urinary disorder, Cough related disease, constipation etc. during illness or difficult time you should worship kartiveer Arjun (not Mahabharat's Arjun). The ladies should worship Santoshi mata.

Occupation

The professions suitable for you are Restaurant, Hotel, Sculptor, Designer, Trading, Musician, Novelist, Dramatist, Short story writer, Horticulture, Trading of cloth, Actor, perfumes, Oils, Flower trading, Jewelry, silk, Terylene, woolen clothes, sweets, watch making, opera, literature, social work, transport, printing, ford department etc.

Fast

Observe fast on Friday for eliminating the malefic effects of Venus. This should be continued for 21 or 31 Fridays. Wear white clothes and donate white goods. As much as possible, recite Shukra mantra on crystal beads.

Favourable Stones or Substitute Stones

Wear diamond. If you cannot buy it then wear opal, white Topaz or Zarkin. Wear 51 cents diamond on a Friday of bright half of the month at an auspicious

time in a platinum or silver ring, in right hand ring finger. The ring should touch the skin of finger.

Favourable Lord

Worship shukra or Goddess Durga. Recite mantra "Om Hreem Dum Durgaye Namah" daily minimum 108 times. Observe fast on Ashtami (8th date of Indian calendar) and read Durga Saptashati. By this you will be rid of different problems and diseases. If this is not possible for you then look at the picture of Devi Durga daily in morning.

Grah Gayatri Mantra

In order to increase the benefic effects of Venus you should recite the Sukra Gayatri Mantra in the morning 11, 21 or 108 times.

Mantra :

"Om Bhrijugay Vidmahe Divyadehay Dheemahi Tanno Shukrah Prachodyat".

Grah Dhayan Mantra

Concentrate on Sukra (Venus) in the morning after getting up, establish a picture of Sukra in your mind and recite the following mantra.

Himkundmrinalabham,
Daityanaam Param Gurum,
Sarva Shastra pravaktaram,
Bhargavam Pranamamyaham.

Grah Jaap Mantra

You should recite shukra mantra for converting a malefic shukra (Venus) into a favourable planet. By reciting it minimum 108 times daily can render desired results. The complete course is of 106 malas i.e. 106 x 108 times. You will yourself be able to feel it's effect.

Mantra :

"Om Dram Dreem Drom Sah Shukray Namah" , 16000 times.

Herbal Wearings

Bring on a Friday 1 inch long root of Sarphonkha. Wrap it with white thread and wear in your right hand or keep it in a platinum or silver tabeez (talisman) and wear on your neck. This will reduce the malefic effects of Venus and benefic

influences will increase.

Herbal Bath

Take a bucketful of water and put in it a powdered mixture of Harad (Myrobalan), Baheda (balleric myrobalan), Aaonla, Cardamom, saffron and mansil etc. A bath with this water will relieve you from all diseases. This herbal bath will also give a new shine to your skin. The malefic effects of Venus will be reduced and your esteem will be raised.

For appeasement of all planets take the powdered mixture of Kuth, Khilla, Kangni, mustard, pine, turmeric, Lodh and Sarvoshadhi, mix it with the water of a holy place and take bath with it while remembering god. The planets will be pleased and your wealth and happiness will improve.

Materials to Donate

For appeasement of Shukra (Venus), donate to a worthy person materials of Shukra such as Silver, Gold, Rice, Ghee, White clothes, White Sandal, Diamond, White horse, Curd, Perfumes, Cow, Land etc.

Yantra

For appeasement of Venus write it's yantra on bhojapatra by the ink of ashtagandh (Saffron, camphor, Aloes, Tagar, Musk, Sandal). Keep this yantra in a gold or copper tabeez (talisman) and worship it by dhoop - deep, tie it with a golden chain or a yellow thread and wear on a Friday of bright half of Moon in the morning.